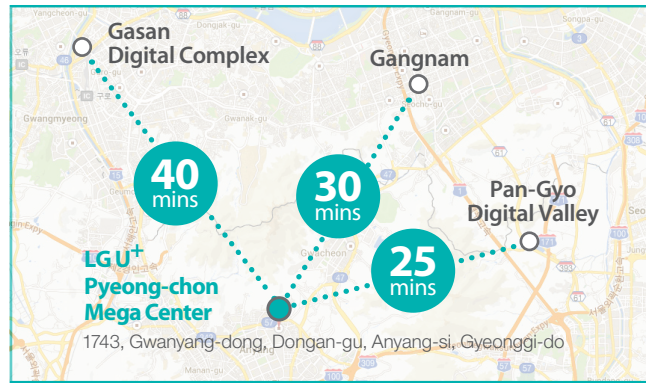


Location



- Located in the center of Pyeong-chon Smart Square Complex
- 5 mins of walking distance from Pyeong-chon subway station
- Surrounded by 27m/15m Blvd.

LG U+ IDC Centers

- Pyeong-chon Mega Center
- Sang-am Center
- Gasan Center
- Seocho 1 Center
- Seocho 2 Center
- Nonhyeon Center
- Anyang Center
- Daegu Center
- Daejeon Center
- Gwangju Center
- Jeonju Center
- Busan Center

Pyeong-chon Mega Center Value-added Service



Green Zone
Providing Hot-Ambient Temp(30°C) colocation service for cost saving



U+ optimized full server rack
Providing servers and rack with HTA environments for drastic cost saving



High capacity DCI
Inter-datacenter and Metro Connection for high quality dedicated NW service



Managed service
Storage/Installation/ Inspection/Security/Backup/ Smart Hands for support of enhanced remote customers

LG U+ IDC Services



U+ Biz Colocation



U+ Biz Hosting



U+ Biz CDN



U+ Biz Cloud N



U+ Biz IDC Managed Service

U+ Biz IDC

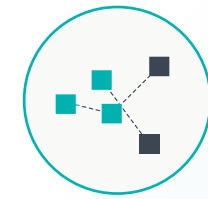
☎ 1544-0001
(Business Customer Hotline)



Scan for further information.

Biz
True Experience

LG U+



Global Class MW Modular Center



Tier III Certified Risk ZERO Center



Eco-friendly Center



Advanced Security



Premium Operational Environments



Customizable



U+ Biz IDC

Leading new datacenter paradigm,
LG U+ Pyeong-chon Mega Center



LG U⁺ Pyeong-chon Mega Center



About LG U⁺ IDC

Korea's First and Largest Datacenter Provider!
Optimized to customers' IT environments with more than 15-years of IDC Operational Know-how

- Established **KIDC Nonhyeon Center in 1999**
- Operating 6 centers in metropolitan area and 6centers in province
- ISO 270001, ISO 9001 certification
- The first ISO 20000 certified among Communication Carriers
- Best IDC service provider awarded by Frost & Sullivan
- Information Security Management System, IMIS, accredited by Korea Internet & Security Agency (KISA)



Key Benefits



Asia's Largest White space, Global Class Mega Watt Modular Datacenter

- Offering contiguous 450 racks per module, providing scalability and back-up configuration upon modular basis
- Providing unlimited power supply of 6~20 kW per rack, more than 3 times of operational management efficiency by increased rack density
- Providing Public, Private Cloud computing environments based on high density operation



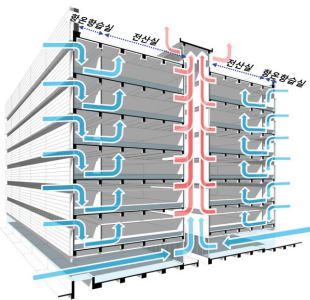
Risk ZERO Center, The First Uptime Tier III certified among IDCs in Korea

- 24/7 uninterrupted service, guaranteeing 100% SLA
- Globally standardized colocation service in Korea



Eco-friendly Center, with patented Free-cooling system in Metropolitan area

- Seasonally changing free-cooling operation modes, optimized efficiency with air-side economizer for more than 7 months
- PUE 1.4, enhanced energy efficiency by 50%, and reduced Utility rate by more than 20%, compared to existing centers



▲ Architectural Hot/cold Arrangement



Colocation IDC with Complete Physical Security

- Physical separation of datacenter and office, parking lots on ground level, 5 steps of access control
- Complying with Local and Global Authorities' Information Regulation :
Security codes of Financial Supervisory Service, Direct Information Communication Regulation and TIA-942 International Security Standard



Premium Operational Environments (NOC, Office , Amenities)

- Providing 3,300m² size of dedicated operation office for clients(physically separated from datacenters)
- Amenities for residing operators(sleeping room, lounge, Fitness, seminar room, conference room, etc.)



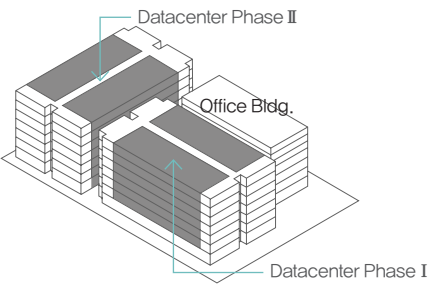
Customizable and dedicated datacenter provision

- Green-zone service (HTA, high temperature ambient environments), U⁺ Green hosting(U⁺ Server & Rack & Installation)
- Customer-specific design, buildup and operation service



Pyeong-chon Mega Center Overview

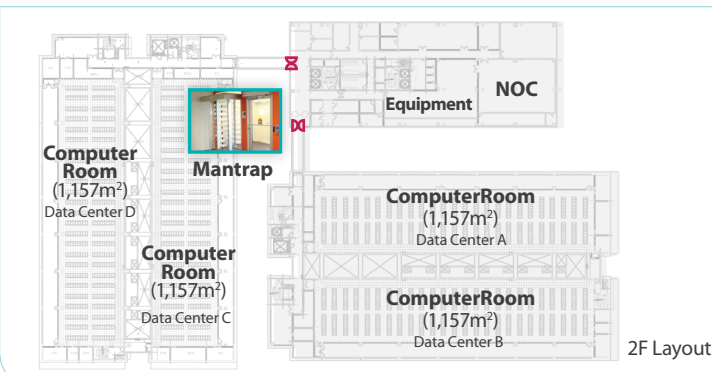
Opening	2015.7
Building	Office building, Datacenter#1 (A, B) Datacenter#2 (C, D)
Floors	7 floors above ground, 3 basement levels
Gross Area	85,548m ²
White Space	27,770m ²



**"Phased and Modular Expansion,
Providing Asia's Largest white Space"**



Floor Plan



- Dedicated Elevator for visitors
- Mantrap for datacenter entrance (anti-tailgating)
- Dedicated entry/exit for each wing
- 5 steps of an access control
 - Access Control
 - Exclusive Elevator
 - Mantrap for access
 - Security door control
 - Customer space control



SPECIFICATION

Category	Item	SPEC	Tier III Standard
Architectural	Height of floor/Access floor	6m/1m(Local Top level)	-
	Seismic Class	Special grade	-
	White space(m ²), No. of Modules	1,157m ² , 24	-
Electrical	Utility capacity/voltage (phased expansion)	165MW/154kV	-
	Utility incomings	Active/Active	Single
	UPS system	Static, N+1, multiple STS	N+1
	PDU/Branch circuit monitoring per rack	2N/YES	2N
	Power Supply per Rack	Avg. 10kW	-
	Generator	Diesel, N+1	N+1
	Power supply to Mech-Systems	Active/Standby	Active/Standby
Mechanical	1:1 configuration of Turbo chiller and Cooling tower	N+1	N+1
	CRAC, Inverter applied	N+1, Redundant rate of 20+ %	N+1
	Condenser/Chilled water pump/piping	N+1/Concurrently maintainable	N+1/Concurrently maintainable
Fire Protection	Fire Detection	Early Smoke Detection System(VESDA)	-
	Fire Extinguish	HFC-23, Environmentally-friendly	-
Security	Access Control	RF Card + Biometric + Mantrap Vehicle entry control	-
	CCTV Monitoring	Major entrances in/outside, Between rows in computer rooms, with recoding capacity of 3+ month	-
Operation	Integrated Monitoring	Yes	Yes
	24x365 NW/Facility/Security	Yes	Yes